



Government Edition
pcmg.com | 1-800-625-5468



Data Center

Networking

Endpoint & Mobility

TECHNOLOGY SOLUTIONS

Legacy to Legendary



How secure is your organization?

Learn more about PCMG 's security assessment, designed to identify the potential threats to your vulnerable network. [PAGE 21](#)



SOLUTION TECHNOLOGY PRACTICES



Best in Class IT for Your Peace of Mind

DATA CENTER



Whether physical, virtual, converged or software defined, your Data Center is the brain of your organization and PCM-G Data Center solutions will keep it agile enough to tackle the most complex challenges.

NETWORKING



PCM-G can improve the security and performance of your network wired or wireless, LAN or WAN keeping critical applications like voice and video active so your workforce can stay productive.

ENDPOINT & MOBILITY



Mobility solutions turn end point devices into valuable assets, enabling your team to securely access the organization's networks, data and applications extending the workplace to any place.

SOFTWARE Migrate, deploy and manage your vital software with confidence as our experts provide the most cost-effective software solutions tailored to your specific organization needs.

SECURITY PCM-G enables comprehensive end-to-end security solutions from industry leading security hardware, software and service providers. Security is at the core of everything we do.

SERVICE FIRST PCM-G offers a full portfolio of services that are built on industry standards, ITIL processes, and over 1000 engineers, technicians, and project managers focused on identifying, designing, and configuring. With decades of real world experience architecting, integrating and managing complex solutions and services, adherence to ITIL processes and a methodology that's focused on your organization's results.

HYBRID CLOUD + CLOUD + ON-PREMISE Deciding the model of IT Solutions and Services for your agency can be challenging. PCM-G provides insight and expertise to help you weigh the important flexibility, security, and control factors.



PCMG can help with an **Intel vPro Management Solution**



SCAN CODE to watch video

Inside this issue:

HARDWARE

Systems

Desktop Computers	30-33
Laptops & Notebooks	31, 34-35
Tablet Computers	36
Apple Systems	38-39

Peripherals & Add-ons

Conference Phones	27
Printers & Scanners	28-29

Data Center Solutions

Servers	7-9, 16-19
Network Storage	10-11, 16-17
Security	22-23, 25
Backup	26

ARTICLES

Windows Server 2003	5
Security Assessment	20
Cisco Security Readiness	21

SOFTWARE

Virtualization Software	13-14
Backup Software	19
Mobility Software	24
Microsoft Software	37

TERMS OF USE & SALE 37

Intel

Ultrabook, Celeron, Celeron Inside, Core Inside, Intel, Intel Logo, Intel Atom, Intel Atom Inside, Intel Core, Intel Inside, Intel Inside Logo, Intel vPro, Itanium, Itanium Inside, Pentium, Pentium Inside, vPro Inside, Xeon, Xeon Phi, and Xeon Inside are trademarks of Intel Corporation in the U.S. and/or other countries.

The PCMG Advantage

Government Drives Our Business

From single item purchases to complex procurements, PCMG is the reseller of choice for thousands of federal, state, and local government customers. And from tablet computers to the data center — and everything in between — we have the solutions and services you need to fulfill your IT mission.

Contracts & Procurement Options

Federal Government Wide Acquisition Contracts

GSA Contract: GSA-35F-5946H
 NASA SEWP V Contract: NNG15SC18B & NNG15SC44B
 Netcents-2 Contract: FA8732-14-D-0006

Agency Specific Contracts, Blanket Purchase Agreements, and Portals

NASA HQ, World Bank, DoD Email, DOE, AFWAY, Intramalls, and many more.

Leading State and Local Contracts

California Multiple Award Schedule
 California Department of General Services (Microsoft)
 Commonwealth of Virginia Accessories, Peripherals, & Software
 Los Angeles Department of Water and Power
 Texas DIR Adobe
 And more...

Authorizations and certifications at the highest levels from most major manufacturers:



No Credit Card Surcharges
 We accept MasterCard, Visa, Discover, American Express, and Diners Club



PCMG Sales **1.800.625.5468**

Web: **pcmg.com**

E-mail: **sales@pcmg.com**

PCMG goes green!

The paper used in this catalog, except for the inserted material, was printed on paper certified under the Sustainable Forestry Initiative® program. The SFI certified sourcing label is proof that PCMG is using fiber from responsible and legal sources.



Visit www.sfi-program.org for more information on the SFI program.



What does End of Support mean for Windows Server 2003 users?

On July 14, 2015 Windows 2003 server support is coming to an end. According to Microsoft, 39% of all systems are currently running on Windows 2003 server, that's 24 million servers worldwide, and 9.4 million of those servers are in the United States. With an estimated 200-day timetable for a full migration, the time to prepare is now, and PCMG is here to help with all your organization's migration needs.



NO NEW UPDATES

Microsoft will no longer develop or release any updates after ending support. That includes any critical updates to patch security holes and feature gaps, leaving your systems vulnerable to security threats.



OUT OF COMPLIANCE

Windows Server 2003 will fail to meet compliance standards. Organizations operating under HIPAA or FERPA laws must upgrade from unsupported infrastructure and migrate from Windows Server 2003 for compliance.



LOST SAVINGS

The average cost of running an outdated system could cost you anywhere from \$60,000- \$200,000 annually. Aging hardware costs and external security measures to accommodate it will cost more.

HOW PCMG CAN HELP

PCMG is here to give you the proper tools to successfully migrate to a powerful new system. By thoroughly planning out your migration, you'll be given the ability to completely strengthen your technological infrastructure and modernize your systems. Leverage PCMG's expertise and partnership with Microsoft to implement the most effective strategy for migrating off Windows Server 2003.

Prevent a burden on your organization's resources by relying on PCMG's depth of professional engineers and tools. We will provide you an appropriate migration strategy so your organization doesn't run the risk of

missing critical dependencies on Windows Server 2003 infrastructure, which could cause degradation of critical applications — or a complete outage.

The PCMG Windows Server 2003 Migration Assessment produces a documented Migration Strategy for your organization, summarizing the environment discovery, assessment, and recommendations for migrating to Microsoft Windows Server 2012. The assessment also provides you a summary of current Microsoft licensing.

Trust PCMG to plan, implement, and manage, your migration before its too late.

Contact your Account Executive today to learn more about the Windows Server 2003 migration options that best fit your organization's needs.

Call 1.800.625.5468 or visit pcmg.com



July 2015 marks the end of support for Windows Server 2003.

Upgrade your IT environment now using the Intel® Xeon® processor E5 v3 product family with Windows Server 2012 R2—with the option to burst into Microsoft Azure public cloud—to gain breakthrough performance, speed, and flexibility.



When time runs out...
... your agency could be facing risks.



 Compliance Compliance failure can bring workflows to a halt.	 Security Without security updates, sensitive data is at risk.	 Inefficiency Maintenance for custom support agreements will cost more.
--	---	--

And an aging infrastructure can hold you back from virtualization and cloud.

The countdown has already begun

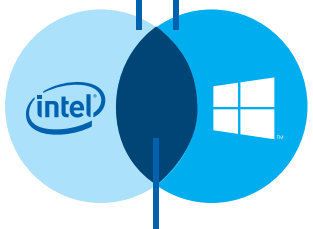
Act now by upgrading. Maximize performance, security, and compliance with the Intel® Xeon® processor E5 v3 product family running Windows Server 2012 R2.

The Intel® Xeon® processor E5 v3 product family provides:

- Optimization for large-scale data centers
 - Up to 3x more memory bandwidth
 - Up to 18 cores for increased parallelism
 - Faster compression
 - Up to 2x encryption acceleration

Windows Server 2012 R2 is designed for:

- Enterprise-class scalability
- Enterprise-grade security
- Virtualization of compute, storage, and networking
- Enhanced power management interface



Together, these industry leading solutions:

 Provide a scalable IT foundation.	 Deliver up to 3.1x higher performance.	 Increase energy efficiency across all load levels.	 Boost agility.
---------------------------------------	--	--	--------------------

Initiate Migration Sequence

- Step 1: Discover and assess**
 Discover and assess your apps and workloads running on Windows Server 2003.
 - Download and run the Microsoft Assessment and Planning (MAP) Toolkit to assess your server infrastructure.
 - Use the Azure VM Assessment Toolkit to get a checklist for moving to the cloud.
- Step 2: Target destination**
 Target a migration destination—in the data center or in the cloud—for each app and workload.
 - Create a profile of the costs for moving your infrastructure to the Azure cloud.
- Step 3: Upgrade hardware and software**
 Upgrade hardware to the latest Intel architecture running Windows Server 2012 R2
 - Optimize your data center.
 - Plan a cloud strategy.
- Step 4: Migrate and launch!**
 Launch a plan by moving apps to the platform of your choice.
 - Migrate with Windows Server tools.
 - Use the Microsoft SQL Server Migration Assistant.
 - Discover IIS Web Deploy.

High performance infrastructure



Enjoy top-class server serviceability

HP ProLiant DL380 Gen9

Reliability, serviceability, and near continuous availability, backed by a comprehensive warranty, makes it ideal for any server environment. Deploy the data center standard. Designed to reduce costs and complexity, leveraging Intel's latest E5-2600 v3 processors.

- Intel® Xeon® processor (20MB cache, 2.60GHz)
- 16GB DDR4 SDRAM
- 2U rack-mountable servers
- 2-way server scalability



HP Smart Buy ProLiant DL360 Gen9

Combined with HP DDR4 SmartMemory support up to 768GB while delivering up to a 14% performance improvements over previous generations. Manage your DL360 Gen9 Server in any IT environment by automating the most essential server lifecycle management tasks: deploy, update, monitor and maintain with ease.

- 2 Intel® Xeon® processors (20MB cache, 2.60GHz)
- 16GB DDR4 SDRAM
- 1U rack-mountable servers
- 2-way server scalability



only **\$3949⁹⁹** #13269606

only **\$3884⁹⁴** #13269423

HP takes your systems even further



HP Enterprise Hard Drive

Robust SAS interface Ideal for transaction processing, database applications, and analytics.

- 900GB hard drive
- 2.5" hot-swappable SFF
- 10000 rpm
- SAS 6Gb/s

only **\$581⁹⁹** #9418512



8GB HP DDR4 DIMM

Enables HP ProLiant Gen9 Server series to reliably identify and confirm that installed memory has passed HP tests.

- 8GB capacity
- DDR4 SDRAM
- 1DIMM 288-pin

only **\$146⁹⁹** #13272399



HP Foundation Care 24x7 Service

Comprehensive hardware and software services for HP ProLiant DL360 Gen9. Care Pack aims to increase the availability of your IT infrastructure.

only **\$859⁹⁹** #13287556

All Flash and No Compromise

Respond to any demand - effortlessly and without exception or compromise



Save
40%



HP 3PAR StoreServ Flash Storage

Deliver all-flash array performance for the cost of spinning disk, and provide mission-critical resiliency and Quality of Service (QoS). HP 3PAR StoreServ Storage has you covered.

PCM Exclusive price **\$41,999⁹⁹** #13345699

INCLUDES

- 1x 3PAR 7200 Flash Array (QR482A)
- 8X HP M6710 480GB 6G SAS 2.5" SSD (E7Y55A)
- 3-year 24x7 proactive care support
- Startup & Installation included



Make the switch to high speed performance



HP 1820-24G Switch

Offers more choice and flexibility for smaller organizations that require ease of use and lower TCO, while delivering better network performance with an enhanced user experience. Devices are smart-managed, fixed-configuration Gigabit Ethernet Layer 2 switches with basic features in an easy-to-administer solution.

- Smart-managed Layer 2 switch with 24 10/100/1000 and 2 SFP 100/1000 ports
- ARM Cortex-A9 @ 400MHz
- 128MB SDRAM

only **\$269⁹⁹** #13483642

HP 5400R-44G-PoE+/4SFP v2 zl2 Switch

Mobile campus access solution with HP Smart Rate multi-gigabit ports for high speed connectivity and bandwidth for next wave 802.11ac devices. Enterprise-class resiliency and innovative flexibility and scalability to converged campus networks.

- High performance campus switching and leading edge security
- Multi gigabit bandwidth and PoE+
- 6-bay and 12-bay models



only **\$4819⁹⁹** #13380701



HP FlexFabric 5900CP-48XG-4QSFP+ Switch

Provides a converged, top-of-rack, data center switch architecture that offers wire once for FCoE converged environments. With 48 converged ports that support 1/10GbE and 4/8 FC, the FlexFabric 5900CP delivers versatile convergence for connecting FC, iSCSI and FC SANs. All 48 ports support LAN, iSCSI, NAS, FC and FC SANs. Delivers 1.28Tbps switching capacity for demanding applications.

Call for price! #9965661

Optimized and easy-to-deploy

Simplifying implementation, maintenance, and support of database and application workloads.



The Oracle Exadata Smart Combo delivers Exadata power and impressive performance along with high bandwidth ZS3 storage for backup plus data protection options for your database. It's a complete, ready-to-go solution that saves you power, floor space, and integration costs while providing low TCO and ultra-fast performance for all of your users and backup processes.

- Fastest possible backup and recovery for Exadata with ZS3 storage
- Highly Available Database and Disaster Recovery
- No more Database to Storage tuning
- Run Database queries FASTER
- Analyze Data warehouses FASTER
- Lower TCO with pay as you grow (from 1/8th rack)
- Faster ROI



Oracle's Database Appliance is a fully redundant integrated system designed to save you money

JD Edwards EnterpriseOne software, optimized for the powerful Oracle engineered system, gives you the complete IT solution for your agency.

The Oracle Database Appliance

An integrated solution of database and system software, server, storage, and networking, the Oracle Database Appliance is engineered to work together, in a single package that is simple to install and manage.

Oracle's JD Edwards EnterpriseOne

This software suite of 80 enterprise resource planning applications combines value, standards-based technology, and deep industry experience to offer comprehensive solutions with low total cost of ownership.

Oracle Real Application Clusters

Ensures database availability by removing the database server as a single point of failure. Real Application Clusters reduce downtime and maintain continuity.

The Smart Combo's cost-effective to run with integrated one-click patching and maintenance, plus savings on floor space and power consumption which frees up budgets.



The Flexibility Model

With the capacity-on-demand database software licensing model, you only pay for what you need.

Rack Servers equipped for the heaviest workloads



Cisco UCS C220 M3 Entry 1 Rack Server

The Cisco UCS C220 M3 Rack Server is designed for performance and density over a wide range of business workloads, from web serving to distributed database.

Perfect for a variety of environments

Building on the success of the Cisco UCS C200 M2 Rack Servers, the enterprise-class Cisco UCS C220 M3 server further extends the capabilities of the Cisco Unified Computing System portfolio in a 1-rack-unit form factor. And with the addition of the Intel® Xeon® processor E5-2600 and E5-2600 v2 processor product families, it delivers significant performance and efficiency gains.

The Cisco UCS C220 M3 offers great performance and density over a wide range of business workloads, from web serving to distributed database.

- Two Intel® Xeon® E5-2600 or E5-2600 v2 processors
- Up to 512GB of RAM with 16 DIMM slots
- Four or eight SAS/SATA/SSD drives
- 2 PCI Express Gen 3 slots and two 1GE LAN interfaces
- Trusted Platform Module (TPM) for authentication access

only **\$2429⁹⁹** #9837487
 #9837475 Cisco UCS C220 M3 Perform 2 Rack Server **\$5739⁹⁹**



Cisco UCS C240 M3 Perform 1 Rack Server

The Cisco UCS C240 M3 Rack Server is optimized for performance and scalability over a wide range of applications from storage-intensive infrastructure workloads ranging from big data and ERP, to collaboration, to virtualization and consolidation.

Power-packed and ready to deliver

This server can deliver 768GB of memory (24 DIMM slots), up to 24 hard drives and has five PCIe slots for

expanded I/O capability including 10GbE FCoE capable cards. Great processor performance is delivered using the Intel® Xeon® E5-2600 v2 Series Ivy Bridge Processors.

- Intel® Xeon® processor (50MB cache, 2.20GHz)
- 32GB DDR3 SDRAM
- 2U rack-mountable server
- 2-way server scalability
- SATA 6Gb/s

only **\$5229⁹⁹** #9837495
 #9072675 Cisco UCS C240 M3 Rack-Mount Server **\$17,949⁹⁹**

Route your office to a new level of efficiency



Cisco 892 ISDN Desktop Router

Designed to deliver secure broadband, Metro Ethernet, wireless LAN connectivity, and business continuity for enterprise small branch offices. These fixed-configuration routers also come with powerful management tools, such as the web-based Cisco Configuration Professional, which simplifies setup and deployment. The Cisco 892 model includes an integrated ISDN BRI S/T interface.



Cisco Cisco 7301 Desktop router

Optimized for flexible, feature rich IP/MPLS services at the customer network edge, where service providers and enterprises link together. The Cisco 7300 Series can be used for enterprise campus or Internet gateway applications or be deployed by service providers.

only **\$836⁹⁹** #7827320

only **\$13,229⁹⁹** #9347063

Cisco 3945 Desktop Router

The new Integrated Services Routers Generation 2 are future-enabled with support for new high capacity DSPs (Digital Signal Processors) for future enhanced video capabilities, high powered service modules with improved availability, multi-core CPUs, Gigabit Ethernet switching with enhanced POE, and new energy visibility and control capabilities while enhancing overall system performance.

- 3U rack-mountable Integrated Services Router
- 3 x RJ-45 10/100/1000Base-T Network WAN
- 1GB standard memory
- 2GB DRAM
- Power supply redundant

Delivers highly secure data, voice, video, and application services to the small office.



only **\$12,169⁹⁹** #7956315
 #13214435 Cisco 3945 Voice Bundle - router

\$13,379⁹⁹

Evolution and Trends of Virtualization Technology

Welcome to a faster more efficient IT infrastructure

Virtualization software has rapidly transformed the IT landscape and has changed the way people compute. Our servers, storage devices and networks have been transformed and 'virtualized' from physical and tangible artifacts to mere 'files' sitting atop a thin layer of software called a hypervisor. Decoupled from the physical world, these compute resources and virtual machines can be dynamically allocated with just a few clicks and keyboard strokes.



Virtual Machine means no hardware

The operating system can't tell the difference between a virtual machine (vm) and a physical machine, nor can applications or other computers on a network. Virtual machines think and act like a "real" computer, but since VMs are composed entirely of software and contain no hardware components they offer a number of distinct advantages over physical hardware. VMs can be copied, replicated, migrated and even scripted; they are after all merely files sitting on a layer of software.



A variety of advantages

Virtualization began in 1960 with mainframe computers, to methodically and logically divide the system's resources provided by mainframes between different applications. IBM began this work in 1964, but the full adaptation of server virtualization wasn't until 1999 when VMware introduced their VMware Virtual Platform to the market. VMware found a way to completely virtualize an IT's hardware infrastructure. The advantages brought on by virtualizing technology are more impactful than ever before. Virtualization has enabled IT to more effectively deal with shrinking IT budgets, scarcity of resources, the need for operational flexibility, energy conservation, and dramatically increased information security. If your organization has already taken the leap into virtualization, what's next on the horizon?



Hybrid offers complete control

For many organizations, developing a hybrid cloud strategy is the next logical step. Bridging your virtualized data center with the public cloud (aka Hybrid Cloud) combines the advantage of scalability and cost-effectiveness that a public cloud computing

environment offers, without exposing critical applications and data to third-party vulnerabilities. Adopting hybrid architecture provides you with complete control over your cloud environment, higher security and privacy control, the ability to react and evaluate outages, man-made issues or natural disasters, and will often provide additional budgetary flexibility.



A new wave of VM

We are likely to see the wide spread adoption over the next couple years of both automated and virtualized networks, security and even virtualized operations. Both virtualization and automation have become a necessity, both for driving down costs and enabling us to operationalize our ability to deliver new services at an ever-increasing pace. But the biggest change might just be a completely new approach.



Adopting the new approach

Companies like Docker and CoreOS, with their recently announced Rocket container technology are quickly gaining attention and trying to plant a flag both in your data center and in the cloud. In some ways the approach is almost anti-virtualization. The intent is to provide a self-contained platform for building, shipping and running distributed applications. Essentially providing applications or portions of an application packaged in self-contained lightweight containers that run independent of either a physical or virtual platform. ■

Contact your PCMG Account Executive today

to gain access to the highest quality technology, industry leading partners, and exceptional service.

1-800-625-5468 | www.pcmg.com

Benefit from simplified storage

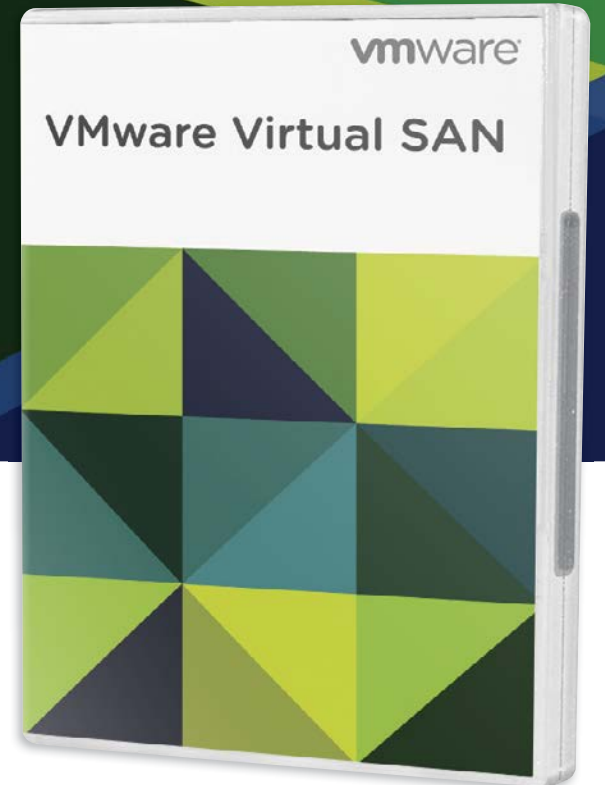
VMware® Virtual SAN™ is radically simple, hypervisor converged storage for virtual machines. It delivers enterprise-class, high performance storage for virtualized applications, including critical applications. Its seamless integration with VMware vSphere® and the entire VMware stack makes it the simplest storage platform for virtual machines.



VMware® Virtual SAN 6.0 License

- Software-defined storage embedded in vSphere
- Runs on any standard x86 server
- Pools HDD/flash into a shared datastore
- Managed through storage policy-based management framework
- Offers high performance through flash acceleration
- Highly resilient with zero data loss in the event of hardware failure

only **\$2219⁹⁹** #13453543



Virtual SAN 6.0 offers several major enhancements and additional capabilities that broaden the applicability of the proven and reliable Virtual SAN technology to critical environments as well as blade deployments. It delivers:



Simple Storage for VMs

Use virtual machine-centric storage policies to provide finely granular control and automation of storage service levels. Self-tuning capabilities automatically rebuild and rebalance storage resources to align with the service levels assigned to each VM. Full integration with vSphere and the entire VMware stack delivers an efficient and cost-effective operational model.



Lower TCO by up to 50%

Enable flexible, predictable "grow-as-you-go" scaling and eliminate large up-front investments. Inexpensive industry-standard server components reduce Lower OpEx by simplifying storage management with vSphere tools and automating management of storage service levels through VM-centric policies.



High Performance

Enable read/write caching using server-side flash. Virtual SAN is built into the VMware hypervisor, optimizing the I/O data path to

deliver much better performance than a virtual appliance or an external device. Virtual SAN All-flash architecture provides data persistence on SSDs to deliver extremely high performance with consistent, fast response time.



Elastic Scalability

Scale capacity and performance independently by merely adding new HDDs and SSDs to existing hosts (scale-up). Virtual SAN 6.0 can scale up to 64 nodes per cluster for both hybrid and all flash architectures and up to 200 virtual machines per host (total of 6400 virtual machines per cluster).



Software-Defined Storage for vSphere

Hypervisor-converged architecture enables storage and compute to run on the same physical host with minimal overhead. Seamless integration with the vSphere Web Client and the entire VMware stack simplifies management.

vmware® 6.0

VIRTUALIZE APPLICATIONS WITH CONFIDENCE



VMware vSphere Enterprise Plus 6.0 License
 Server virtualization is the remedy for costly infrastructure sprawl, allowing you to run multiple operating systems and applications on a single computer and improve productivity by reducing physical servers (with each operating at full computing capacity).

only **\$3429⁹⁹** #13453654

VMware vSphere®, the industry-leading server virtualization platform, is purpose-built for both scale-up and scale-out applications. It redefines availability, and simplifies the virtual data center.

All editions of vCloud Suite 6.0 include vSphere 6.0 Enterprise Plus as a component. vCloud Suite Enterprise is a comprehensive offering for resilient, secure, and compliant private clouds that delivers policy-based workload automation, reduces downtime, and accelerates an agency solution's time-to-market.

What vSphere does

- Powerful Server Virtualization**
Virtualize your x86 server resources and aggregate them into logical pools for allocation of multiple workloads.
- Consistent Automation**
Lower operating expenditures and minimize errors by streamlining routine tasks with vSphere's accurate and repeatable solutions.
- Network Service**
Get network services optimized for the virtual environment, along with simplified administration and management.
- Robust Security**
Protect your data and application with the industry's most secure "bare-metal" server virtualization platform.
- Efficient Storage**
Reduce the complexity of back-end storage systems and enable the most efficient storage utilization in cloud infrastructures.
- High Availability**
Maximize uptime across your cloud infrastructure, reducing unplanned downtime and eliminating planned downtime for server and storage maintenance.
- Cloud API Integration**
Provide choice on how to consume your cloud environment.
- Support**
VMware's support team is standing by to help with any virtualization issues you may face.

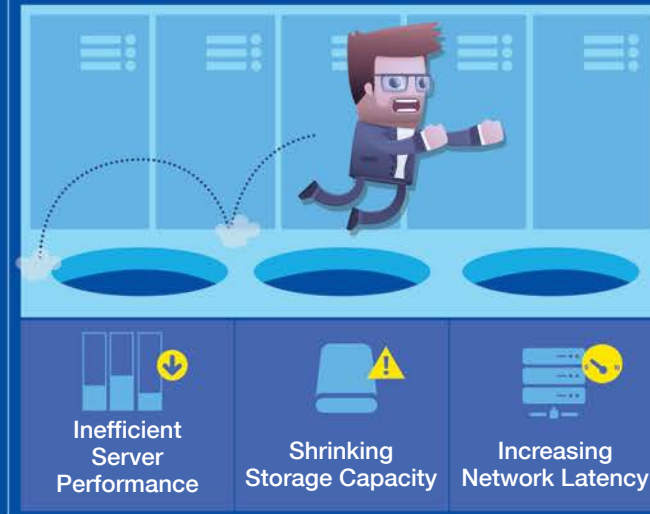
IT'S NOT A GAME. IT'S THE FUTURE OF IT.

DATA CENTER 2.0

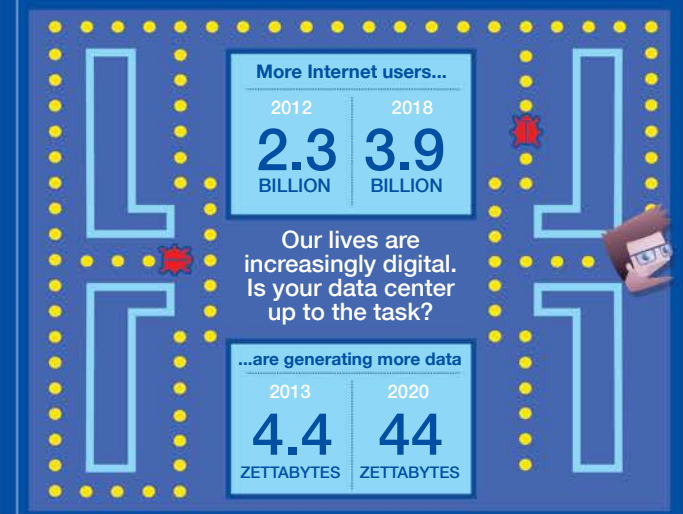
YOUR MISSION

Optimize and rack up huge innovation scores for your enterprise. [Get Started Now!](#)

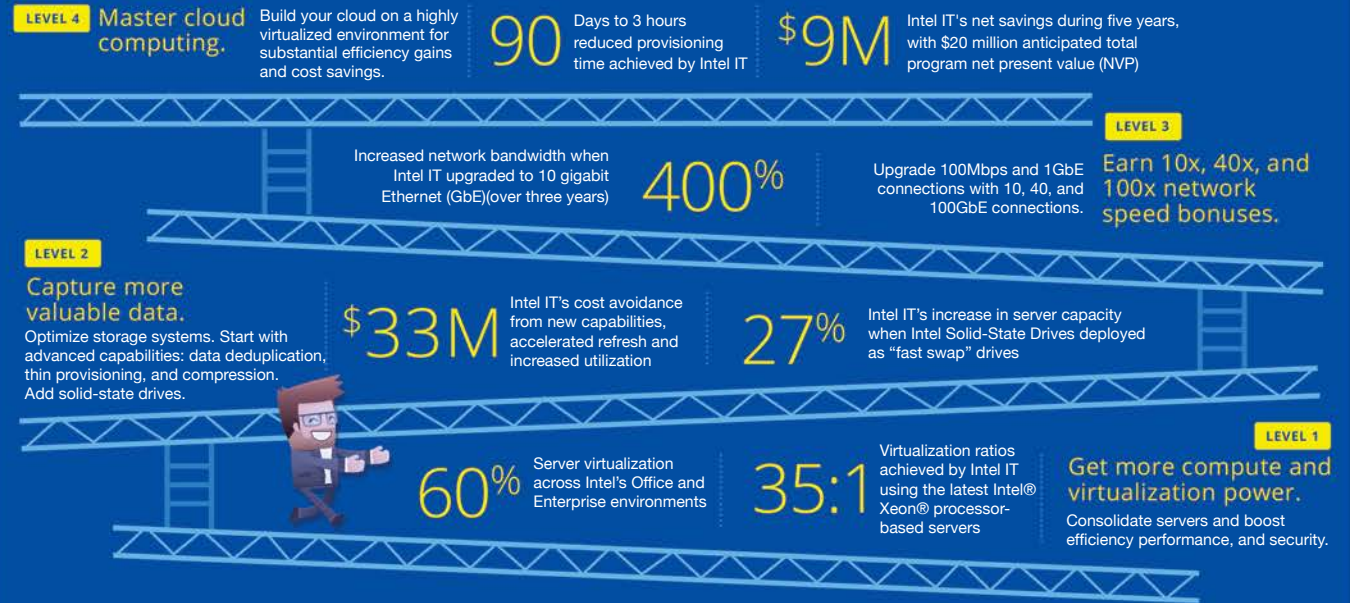
1. Avoid the pitfalls of an aging infrastructure.



2. Prepare to gobble up immense amounts of data.



3. Level up to strengthen your data center.



4. Explore what your enterprise can do.



Source: <http://www.intel.com/content/dam/www/public/us/en/images/illustrations/data-center-best-practices-infographic.png>



Scale smarter Manage easier Innovate faster

Dell PowerEdge: the latest generation

Versatile local storage, zero-touch deployment, embedded intelligence and more – all in the new PowerEdge servers.

M630

A 2-socket blade server, the M630 delivers the same processing power and memory scalability as other form factors. It can be utilized within the Dell M1000e and VRTX infrastructure chassis, allowing optimized deployment anywhere from remote offices to the largest data center.



More Performance. Less Investment.

Dell Storage SC4020 Affordable all-flash

Regardless of industry or size, infrastructures like yours are running enterprise storage workloads– U&C, OLTP, database, ERP – in both remote offices and data center locations. To stay efficient, your critical applications need to be able to access data quickly and efficiently to turn information into insights.

Flash That Fits your Budget

- Up to 72% lower cost versus competing pure flash arrays
- Oracle database responses with less than 1ms latency

Scalable Storage from the Start

- 20+ enterprise features and performance
- Support up to 10,000 Exchange mailboxes

More workloads, less investment

- All-flash for less than HDD
- Boost your OLTP performance up to 129,000 IOPS

More Users in a Compact Form Factor

- Support up to 1800 virtual desktops
- 2U SAN that can scale up to > 400TB

Call for Pricing!

Ultimate security and threat management

Dell SonicWALL TZ Series is one of the most secure Unified Threat Management (UTM) firewall for remote sites, branch offices and distributed enterprises. Unlike consumer-grade products, the TZ Series delivers effective anti-malware, intrusion prevention, content/URL filtering and application control capabilities along with the broadest secure mobile platform support for laptops, smartphones and tablets.



Dell SonicWALL
TZ 205 TotalSecure
1 Year
only **\$463** #9098257

Dell SonicWALL
TZ 215 TotalSecure
1 Year
only **\$931** #9053121

Dell SonicWALL Network Security Appliance 2600 TotalSecure

Delivers gateway anti-virus, gateway anti-spyware, and application intelligence for organizations of all sizes.



only **\$3080** #9797493



Dell SonicWALL Network Security Appliance 250M TotalSecure

Acts as the first line of defense against viruses, Trojans, key-loggers and attacks.

only **\$1839⁹⁹** #8915791

Dell SonicWALL Network Security Appliance 3600 TotalSecure

Provides comprehensive next-generation firewall protection without compromising performance.



only **\$4689⁹⁹** #9638246



PowerEdge R730xd

A performance 2-socket server designed for maximum storage flexibility and scale out efficiency in just 2U of rack space.



PowerEdge R730

A 2-socket, 2U rack server with support for multiple GPUs or accelerator cards, the R730 offers tremendous performance and flexibility for demanding data centers.



PowerEdge R630

Packing all of the performance of a 2-socket server in just 1U of rack space, the R630 delivers incredible resource density for your data center while still offering highly flexible scalability.

PowerEdge T630

A 2-socket tower server which can also be utilized as a 5U rack-mounted server, the T630 delivers extensive internal storage, performance and scalability.



Combining industry advances in processing and memory with customer-inspired Dell innovations, next generation PowerEdge servers, help IT organizations to:

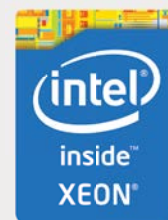
Accelerate application performance.
In-server Flash configurations, Dell PowerEdge servers accelerates data intensive applications such as real-time data analytics, databases or ERP.

Improve data center efficiency.
In-server tiered storage and hybrid Flash/rotational storage are ideal for deploying software defined storage solutions.

Grow data centers and cloud easily.
The agile scale out server solutions can be easily deployed, letting IT react quickly to operational demands.

Optimize your enterprise with Dell Server solutions.
Call your PCMG Account Executive today. 1-800-625-5468.

Intel, the Intel logo, the Intel Inside logo and Xeon are trademarks of Intel Corporation in the U.S. and/or other countries.



Call 1.800.625.5468 or visit pcmg.com





Get up to a 50% boost in performance and up to a 50% increase in power savings.



More power. Less hassle.

Lenovo ThinkServer RD450 70DC

The Lenovo ThinkServer RD450 boasts powerful processors. With plenty of memory via multiple slots, there is a tremendous increase in capacity over the previous generation. Because the RD450 uses advanced memory, you get up to a 50-percent boost in performance and up to a 50-percent increase in power savings — enabling your applications to run faster and more efficiently. These improvements, coupled with the RD450's highly flexible design, make it perfect for your infrastructure

- 2U, 2-way rack-mountable server
- 1 x Xeon® E5-2630V3 (20MB cache, 2.40GHz)
- 8GB DDR4 SDRAM RAM
- 3.5" hot-swappable bays
- Lenovo AnyRAID Design on 2.5" Chassis
- DVD-Writer AST2400

only **\$1679⁹⁹** #13367159

Lenovo ThinkServer TS140 70A4

When setting up your network, it's always best to have a server. And a reliable server for your agency is the Lenovo Thinkserver TS140.

The TS140 Lenovo Thinkserver is an enterprise-class tower server that is easy to set up and is very affordable. This means even small agencies can start a small network for office computers.

- 4U tower server
- Intel® Xeon® E3-1225V3 (8MB cache, 3.20GHz)
- 4GB DDR3 SDRAM
- ThinkServer RAID 100
- 1600MHz memory speed
- Intel® HD Graphics P4600



only **\$537⁹⁹** #9783594

Lenovo ThinkServer TS440 70AQ

The ThinkServer TS440 is a true enterprise-class server. Thanks to the increased performance of the powerful processors, the TS440 has the power and speed to handle your workload with ease. You can also choose between enterprise SAS or SATA hot-swap drives. Plus, the TS440 is designed for 24/7 operation and is certified for MSP support with many ecosystem vendors.

- 5U tower server
- Intel® Xeon® E3-1225V3 (8MB cache, 3.20GHz)
- 4GB DDR3 SDRAM
- ThinkServer RAID 100
- 1600MHz memory speed
- Intel® HD Graphics P4600



only **\$608⁹⁹** #9783862

The fast, cost-effective system backup solution



Veeam Backup & Replication Enterprise Plus for VMware

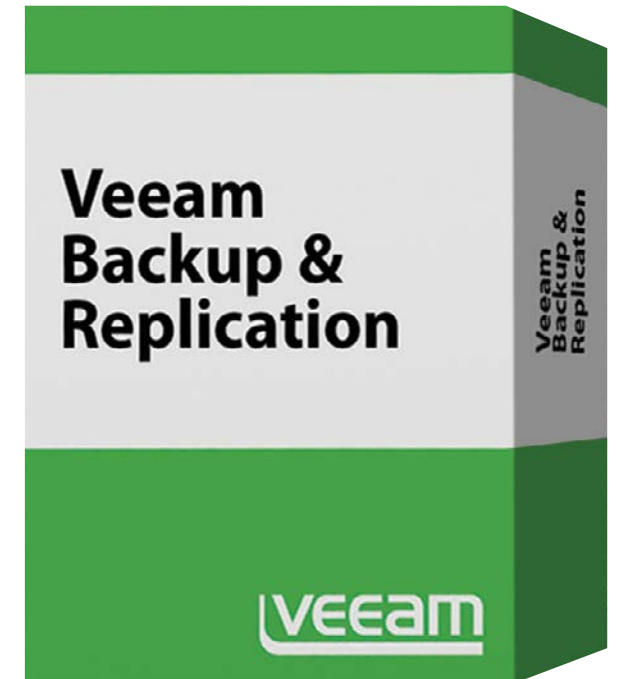
Veeam Backup and Replication is best way to back up and protect your virtual machines. It does not just support your virtual environment - rather, it leverages that environment to provide a whole level of protection for all your virtualized applications, services and data.

The best value in backup

Veeam Backup and Replication provides exceptional value. It is licensed per CPU socket on the ESX host and includes backup, replication, deduplication and centralized management. There are no per-agent, per-VM or per-application license fees.

- 1 CPU socket license
- Data protection and streamlined disaster recovery
- Low-risk deployment, production-like test environment
- Proactive monitoring and alerting of issues

only **\$4189⁹⁹** #13430240



Next generation firewall capabilities

Next generation firewall capabilities



Meraki Cloud Managed Switch MS220-48

The Meraki MX is a complete next gen firewall and branch gateway solution, designed to make distributed networks fast, secure, and easy to manage. The world's first cloud-managed security appliance, the Meraki MX provides complete visibility and control in different environments.

- Application-aware traffic control
- Prioritize critical applications and throttle recreational traffic.
- Content filtering: CIPA compliant category-based content
- Stateful firewall: set firewall policies through interface.

only **\$21089⁹⁹** #8986391

Meraki Cloud Managed Ethernet Aggregation

Cisco Meraki aggregation switches extend Meraki's cloud management to campus deployments. Just like access switches, these 10 Gigabit Ethernet aggregation switches are built from the ground up to be easy to manage.

- 1U rack-mountable switch
- 48 x 10 Gigabit SFP+ managed switch
- 960Gbps switching capacity
- 4095 tagged VLANs



only **\$27019⁹⁹** #9884695

Enterprise Network Security Assessment

Assess and Identify vulnerabilities of your network's security

Network security's passive nature forces validation of its effectiveness to a time of attack. Your weaknesses are not identified until after your security is breached – if even then.

PCMG's Enterprise Network Security Assessment actively assesses the security of your network environment from both internal and external sources.

Recognizing the heavy reliance organizations' environments have on information technology, a network security assessment serves as a vital component of maintaining a healthy, safe and secure network and a foundation to your ongoing risk management program.

Some questions you should ask:

- ▶ Are you aware of any external security breaches into your environment?
- ▶ Have your websites been subjected to attacks?
- ▶ Do you have a firewall and is your firewall secure?
- ▶ Are your servers and workstations secure and patched?
- ▶ Do you have sufficient virus and spyware protection on your network?
- ▶ Are your wireless devices secure?

Through PCMG's Enterprise Network Security Assessment vulnerabilities are identified and measurably exploited to provide you with



Network Assessment

Real-world assessments of your network and website protection from external sources-leveraging the same strategies and tools that hackers employ today.



Environment Assessment

Professional assessments of your internal security, permissions, and network protection-leveraging the same tools that provide access throughout your environment.



Expert Advisement

Professional recommendations on securing your environment. PCMG's engagement is fast, built by network security experts, and delivered by our experienced engineers.

Let our team of experts give you the best security options for your organization.

Contact your PCMG Account Executive to get started today | 1-800-625-5468

How secure is your organization?

The Cisco Security Capabilities Benchmark Study reveals disconnects in perceptions of security readiness.



59% of chief information security officers (CISOs) view their security processes as optimized, compared to 46 percent of security operations (SecOps) managers.

75% of CISOs see their security tools as very or extremely effective, with about one quarter perceiving security tools as only somewhat effective.

91% of respondents from organizations with sophisticated security strongly agree that company executives consider security a high priority.

LESS THAN 51% of respondents use standard tools such as patching and configuration to help prevent security breaches.

Large and midsize organizations are more likely to have highly sophisticated security postures, compared to organizations of other sizes included in the study.

Changing the View Toward Cyber security

Cisco security experts suggest that it is time for organizations to start viewing their approach to cybersecurity differently if they want to achieve real world security. Strategies include adopting more sophisticated security controls to help defend against threats before, during, and after an attack; making security a topic at all levels; and implementing the Cisco Security Manifesto, a set of security principles that can help organizations become more dynamic in their approach to security—and more adaptive and innovative than adversaries. Attackers have become more proficient at taking advantage of gaps in security to hide and conceal their malicious activity.

Users—and security teams—are both part of the security problem. While many defenders believe their security

processes are optimized—and their security tools are effective—in truth, their security readiness likely needs improvement. What happens in the geopolitical landscape, from legislation to security threats, can have a direct impact on operations and how an organization addresses security. And taking into consideration all these factors, it has never been more critical for organizations of all sizes to understand that security is a people problem, that compromise is inevitable, and that the time to take a new approach to security is now.

Contact your PCMG Account Executive today
We provide comprehensive security solutions tailored exactly to fit your organization's needs.

1-800-625-5468 | www.pcmg.com

Get the no-compromise security solution for your organization



New Dell SonicWall TZ 400 Security Appliance

The Dell SonicWALL TZ Series of next-generation firewalls (NGFW) is ideally suited for any organization that requires enterprise-grade network protection. SonicWALL TZ Series firewalls provide broad protection from compromise by combining advanced security services consisting of on-box and cloud-based anti-malware, anti-spyware, intrusion prevention system (IPS), and content/URL filtering. To counter the trend of encrypted attacks, the new SonicWALL TZ Series has the ability and processing power to inspect SSL connections against the latest threats, providing an even higher level of security.



The graphical user interface in the TZ Series eliminates the choice between ease-of-use and power.

- New Dell SonicWALL TZ Series is the fastest, small form-factor, advanced deep packet inspection firewall
- New firewalls designed to inspect SSL traffic and eliminate encrypted threats
- With integrated 802.11ac wireless controller, the new SonicWALL TZ provides a complete wireless network security solution

only **\$735** #13520036



The perfect integrated security solution for any size environment



Fortinet FortiGate 140D Security Appliance

The FortiGate-100D series of network security platforms deliver fully integrated Next-Generation Firewall (NGFW) and Unified Threat Management (UTM) capabilities for midsize businesses, branch offices, and small distributed enterprises. High performance throughput, security defenses, advanced threat protection, integrated wireless and switching enable you to deploy enterprise-class services across your organization. The FortiGate-140D features high port density and integrated switching,

enabling enterprises to combine switching and security functions into a single platform.

- Extremely high port density supports your growing network, with up to 42 1-gigabit Ethernet interfaces
- Connects Wireless Access Point, 3G/4G Extenders, VoIP Handsets and IP Cameras to your network security platform and away from power supplies
- Hardened security for environments with high levels of electrical and radio-frequency interference

only **\$2109⁹⁹** #9471321

Support your developing network with Cisco's highest availability, secure router

Cisco 2921 Security Bundle Router

The Cisco 2921 Integrated Services Router (ISR) delivers highly secure data, voice, video, and application service. The modular design of the router provides maximum flexibility, allowing you to configure your router to meet evolving needs. The routers offer features such as hardware-based virtual private network (VPN) encryption acceleration, intrusion- protection and firewall functions, and optional integrated call processing and voice mail.

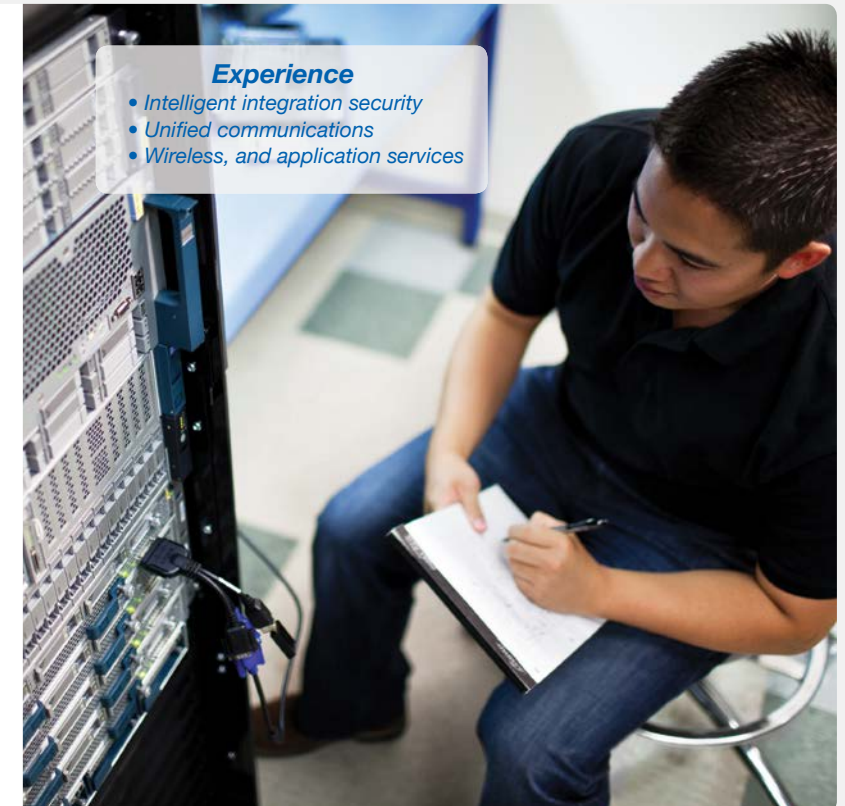
- 1-2 RU modular form factor with Circuit-speed WAN performance up to 75Mbps with services
- 3 onboard digital signal processor (DSP) slots
- 1 internal service module slot for application services
- Fully integrated power distribution supporting 802.3af Power over Ethernet (PoE) and Cisco Enhanced PoE



only **\$4079⁹⁹** #7957672



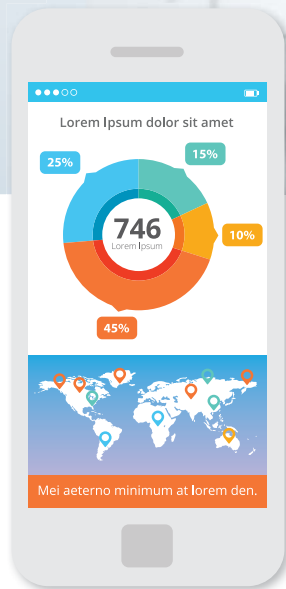
Space and Money saving design
Architected to enable branch-office evolution, providing rich media collaboration and virtualization.



Experience

- Intelligent integration security
- Unified communications
- Wireless, and application services

Essential tools for managing a work-on-the-go lifestyle



We'll give you the training and support to ensure your implementation is successful.

AirWatch Blue Management Suite

Secure and manage every endpoint in your organization from Android, Apple iOS, BlackBerry and Windows, to Android to Windows and Mac OS X.

- Cloud or on-premise deployment
- User or device-based pricing
- Customizable features for your needs

only **\$90⁹⁹** #13163056

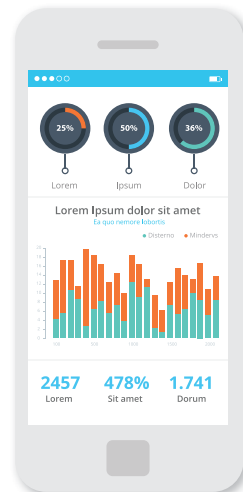
MobileIron Enterprise Mobility Management Platform

The MobileIron platform enables IT to secure and manage a diverse set of mobile devices, automatically provision enterprise settings such as Wi-Fi and VPN and provide end-users with secure access to email.

- Multi-OS management at scale
- Enhanced productivity with app management and content integration
- Effective data security and compliance
- Cost-effective and easy integration
- On-the-go management with iPads and Android tablets



The best way to securely access and manage enterprise contents on a mobile device.



only **\$49⁹⁹** #13433935

Easy, flexible management in a perfectly scalable solution

Get industry leading two-factor authentication engine in a convenient package with customizable configurations and credentialing options for small and large organizations and a fast streamlined set-up process.



The Security Division of EMC

RSA SecurID Appliance 130 Security Appliance

The RSA SecurID Appliance solution can be configured to meet the varying needs and preferences of small and large organizations. The solution is capable of handling from as few as 10 users to millions of users per server. The RSA SecurID Appliance 130 is designed to satisfy the requirements for simple, cost-effective deployments in companies of any size. The RSA SecurID Appliance solution supports all RSA authentication manager license types and can meet a variety of deployment models. For lower cost solutions, the RSA SecurID Appliance 130 can be deployed as a primary and replica servers.

- Rack Mountable security appliance
- 1 x Intel® Dual-Core Xeon® 3100 series 3GHz
- 250GB HDD
- SATA 1.5Gb/s
- 1U GigE

only **\$2939⁹⁹** #7688357



Experience amazingly quick set-up times. Have the Appliance up and running in as few as 30 minutes.



Full integration streamlines update processes and provides a single point of service for the complete solution.



Thanks to interoperability with more than 400 of the industry's leading solutions, the RSA SecurID Appliance fits easily into any environment.



What does 1 hour of downtime cost your Agency?

Wake up your network with APC by Schneider Electric Smart-UPS battery backups!

APC Back-UPS Pro 1000 Uninterruptible Power Supply

The APC UPS Pro 1000VA can give you surge protection featuring 8 power-saving outlets that cut power to idle devices to save you money.

~~\$179⁹⁹~~ **\$123⁹⁹** #8076121



SAVE \$56

APC Back-UPS X 750 Rack Tower LCD UPS

Provides backup battery power in the event of a power outage monitoring and safeguarding your equipment from harmful power conditions. Equipped with a powerful 600-watt power capacity.

~~\$489⁹⁹~~ **\$481⁹⁹** #7950105



Protect switches and routers with APC™ by Schneider Electric Smart-UPS™ uninterruptible power supplies, which also help you:

- ✓ Avoid costly power problems.
- ✓ Reduce costs with patented green operating mode.
- ✓ Save time with remote accessibility.
- ✓ Achieve smarter productivity by tailoring settings.

APC Smart-UPS RT

Improves the manageability, availability and performance of sensitive electronic equipment.

~~\$1075~~ **\$808⁹⁹** #501025



APC Smart-UPS X 2200 Rack/Tower LCD

Entry level Smart-UPS designed for small or medium offices and networks.

~~\$1269⁹⁹~~ **\$1179⁹⁹** #8258548



APC Rack Overhead Cable Extension

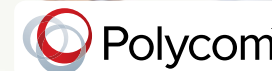
Two access holes with integrated brush strips for routing data.

only **\$179⁹⁹** #8814245
#9333880 APC NetShelter CX **\$4839⁹⁹**

Connect Effortlessly

Microsoft Lync Solutions

Polycom offers the broadest portfolio of video solutions that work natively with Microsoft® Lync® and are designed to be intuitive and familiar for the user.



Conference, call, & collaborate with ease

Polycom Microsoft Lync Edition VVX 310 6-line Desktop Phone

This powerful 6-line entry-level media phone is for workers that handle a low to moderate volume of calls and need crystal clear communications. Give your employees the best experience with this high quality UC media phone. It is designed for a broad range of environments for small and medium organizations.

only **\$157⁹⁹** #13452740



The Polycom CX5500 Unified Conference Station

Delivers a unique HD voice and video collaboration experience in Microsoft® Lync™ environments. The CX5500 provides remote participants with 1080p HD active-speaker video that automatically tracks the flow of conversation. It also adds a unique 360-degree panoramic view of the conference room. Meetings are more productive and participants are clearly heard with Polycom's legendary HD Voice technology, now featuring a dynamic audio range of 160Hz to 22,000Hz.

only **\$5209** #13184701

Polycom CX8000 for Microsoft Lync

Polycom CX8000 for Microsoft Lync extends the rich collaboration features of Microsoft Lync that you are familiar with in a conference room environment and offers optimized group meeting experience for near and remote sites. Polycom CX8000 for Microsoft Lync is purpose-built for Lync 2013 and designed to extend the familiar Lync collaboration experience that people love into conference room environment. The Polycom CX8000 combines the powerful Microsoft Lync software and the intuitive touch control system so that anyone can start face-to-face conversation with interactive content sharing in no time.



only **\$12719** #13445191

Experience professional prints

Xerox Phaser 6022/NI color printer

Streamline processes. Powerful features simplify tasks for small offices, including the Paper Setup Navigator, taking the guesswork out of printing on custom paper sizes and types from plain office paper to envelopes and labels.

- Up to 18ppm B&W and color print speeds*
- 1200 x 2400dpi
- 30,000-page monthly duty cycle



The compact Phaser 6022 color LED printer excels in small office environments.

only **\$279** #13406248



Compact design is great for small and medium offices with minimal desk space.

Lexmark CS510de Laser Color Printer

The solutions-capable Lexmark CS510de network-ready color laser printer with 2-sided printing standard, a 800 MHz dual-core processor and large capacity of standard memory prints at up to 32ppm black and color.

- Up to 32ppm B&W, color print speeds*
- 1200 x 1200dpi print resolution
- 85,000-page monthly duty cycle

only **\$758⁹⁹** #9419852

Epson WF-4630 WorkForce Pro Multifunction Printer

You can print documents directly from your mobile device by easily emailing files to your printer. Also, scanned documents can be stored in cloud services, while Wi-Fi Direct allows printing from wireless devices without needing to connect to the router.

- Up to 20ppm B&W, color print speeds*
- 4800 x 1200dpi print resolution
- 30,000-page monthly duty cycle



Operates with highlighter-resistant ink with quick-drying properties.

only **\$299⁹⁹** #13169120



Its low cost per page makes it ideal for demanding multi-user environments.

Brother MFC-L9550CDW Color Laser All-in-One Printer

Provides easily-managed, low-cost color printing for mid-sized workgroups. Its low cost per page makes it ideal for demanding multi-user environments.

- Up to 32ppm B&W and 27ppm color print speeds*
- 2400 x 600dpi print resolution
- 5,000-page monthly duty cycle

only **\$778⁹⁹** #13192964

*Print speeds vary with use

50% Off PageWide Array Printers

OfficeJet Pro X Printers and OfficeJet Enterprise X Printers

The Next Generation of Printing is Here!

- ✓ **Page-Wide Array Technology** – Taking the printing press to the desktop level
- ✓ **Record Breaking Speed** - World's fastest desktop printers certified by Guinness World Records
- ✓ **Single-Pass Printing**
- ✓ **Twice the Speed and half the cost of a laser**
- ✓ **Not an InkJet and not a Laser either** – Uses liquefied pigments that resist smearing, water spills, and highlighter smudges
- ✓ **Laser-Like Perfection**
- ✓ **BLI Award Winners in 2013 and 2014**



HP OfficeJet Pro X551dw Color Printer

~~\$599⁹⁹~~ **\$299⁹⁹** #9497403



HP OfficeJet Pro X451dn Color Printer

- Up to 36ppm B&W and color*
- 500-Sheet input tray
- 50,000-page monthly duty cycle

~~\$449⁹⁹~~ **\$224⁹⁹** #9497401



HP OfficeJet Pro X476dw Color MFP

- Up to 36ppm B&W and color*
- 50-page double sided feeder
- 92,000-page monthly duty cycle

~~\$699⁹⁹~~ **\$349⁹⁹** #9598744



HP OfficeJet Pro X576dw Color MFP

- Up to 42ppm B&W and color*
- 50-page double sided feeder
- 92,000-page monthly duty cycle

~~\$799⁹⁹~~ **\$399⁹⁹** #9497405



HP OfficeJet Enterprise X555xh Color Printer

- Up to 72ppm B&W and color*
- 80,000-page monthly duty cycle
- 4.3" color touchscreen

~~\$1199~~ **\$599⁹⁹** #13017787



HP OfficeJet Enterprise X585dn Color MFP

- Up to 75ppm B&W and color*
- 80,000-page monthly duty cycle
- 8" pivoting color touchscreen

~~\$1999~~ **\$999** #13044427



HP OfficeJet Enterprise X585z Color MFP

- Up to 75ppm B&W and color*
- 80,000-page monthly duty cycle
- 8" pivoting color touchscreen

~~\$1399~~ **\$1199** #13029941

*Print speeds vary with use

The Desktops for Success



HP ProDesk 600 SFF

Greater Speed & Performance

- 4th gen Intel®Core™ i5 processor (6MB cache, 3.30GHz)
- 4GB DDR3 SDRAM
- 500GB HDD • Intel® HD Graphics 4600

only **\$685** #13259110 Monitor sold separately



HP ProDesk 400 SFF

Stylish Design to Maximize Your Investment

- 4th gen Intel®Core™ i3 processor (3MB cache, 3.60GHz)
- 4GB DDR3 SDRAM • 500GB HDD • DVD±RW
- Intel® HD Graphics 4400 Dynamic Video Memory

only **\$542** #13257068

Monitor and computer stand sold separately



HP Pro 3500 Micro Tower

Simple and Budget Friendly

- Intel® Pentium® processor (3MB cache, 3GHz)
- 2GB DDR3 SDRAM • 500GB HDD • DVD-ROM
- Intel® HD Graphics Dynamic Video Memory

only **\$379⁹⁹** #9777068



HP EliteDesk 800 Mini Desktop

XL Performance in an XS Package

- 4th gen Intel®Core™ i7 processor (8MB cache, 2.20GHz)
- 8GB DDR3 SDRAM
- 500GB hybrid drive
- Intel® HD Graphics 4600

only **\$913** #13241930

Power on the Go



Designed for organizations and built with Intel and Microsoft the full HP line of notebooks satisfies your office needs with legendary HP security, performance, durability and manageability.

Light & Durable Notebooks



15.6" HP 350 G1 Notebook

- Intel® Core™ i3 processor (3MB cache, 1.70GHz)
- 4GB RAM • 500GB HDD
- Intel® HD Graphics 4400

only **\$446⁹⁹** #9995391



15.6" HP ProBook 450 G2

- Intel® Core™ i5 processor (3MB cache, 1.70GHz)
- 4GB RAM • 500GB HDD
- Intel® HD Graphics 4400

only **\$675⁹⁹** #13184732



15.6" HP ProBook 650 G2

- Intel® Core™ i5 processor (3MB cache, 2.70GHz)
- 4GB RAM • 500GB HDD
- Intel® HD Graphics 4600

only **\$829** #13287581

The Elite Experience that Goes Beyond the Everyday



14" HP EliteBook Folio 9480m

- Intel® Core™ i5 processor (3MB cache, 1.70GHz)
- 4GB RAM • 500GB HDD
- Intel® HD Graphics 4400

only **\$899⁹⁹** #13223535



14" HP Elitebook 840 G2

- Intel® Core™ i5 processor (3MB cache, 2.20GHz)
- 4GB RAM • 500GB HDD
- Intel® HD Graphics 5500

only **\$932** #13394425



14" HP EliteBook 840 G2

- Intel® Core™ i7 processor (4MB cache, 2.60GHz)
- 8GB RAM • 500GB HDD
- Intel® HD Graphics 5500

only **\$1349⁹⁹** #13394437

Engineered to Conquer Any Workload

HP Workstation Z230

- Intel® Core™ i5 (3MB cache, 3.30GHz)
- 4GB RAM
- 1TB HDD
- DVD±RW



only **\$749** #13319423

HP Workstation Z420

- Intel® Xeon® processor (10MB cache, 3GHz)
- 4GB DDR3 SDRAM
- 500GB HDD
- DVD±RW



only **\$1235⁹⁹** #13352759

HP Workstation Z640

- Intel® Xeon® processor (15MB cache, 2.40GHz)
- 8GB DDR4 SDRAM
- 1TB HDD
- DVD±RW



only **\$2339⁹⁹** #13319451



THINKPAD T SERIES

Experience ultraportability

The **Lenovo T440P** comes with a 4th generation Intel® Core™ Processor that boosts productivity, allowing you to do more for your organization by multitasking and moving through applications with ease. It also has a longer battery life, leaving you more time for that video conference.

only **\$748⁹⁹** #9811024
#9841424 14" TopSeller ThinkPad T440 20B6

\$1468⁹⁹



Lenovo ThinkCentre M93z 10AF

The ThinkCentre M93z is built for collaboration with its full HD 23 inches LED display. With a 178 degrees wide viewing angle, advanced allows professionals to easily work together on presentations, and other projects

- 4th gen Intel® Core™ i5 processor (6MB cache, 2.90GHz)
- 4GB DDR3 SDRAM
- 500GB HDD

only **\$971⁹⁹** #9735682



Lenovo ThinkCentre M73z 10BC

The ThinkCentre M73z 20" all-in-one gives your enterprise powerful performance and strong security in a sleek, space-saving package. Enjoy working the ThinkCentre all-in-one way.

- 4th gen Intel® Core™ i3 processor (3MB cache, 3.50GHz)
- 4GB DDR3L SDRAM • 500GB HDD
- Intel® HD Graphics 4400

only **\$762⁹⁹** #13325627

Unmatched compute power and reliability

Lenovo ThinkCentre M73 10AY

The ThinkCentre M73 will help make IT deployment easier and more efficient. It is a budget PC that can help you do more. It features performance-boosting SSHD support, PC Cloud Manager 2.

- 4th gen Intel® Core™ i3 processor (3MB cache, 2.90GHz)
- 4GB DDR3 SDRAM • 500GB HDD

only **\$459⁹⁹** #9801344
#13303703 Lenovo ThinkCentre M83 10E9

\$569⁹⁹



Mounts easily to the back of your monitor to save you even more room on your desktop.



For those who thrive in the worst

Dell Latitude 12 Rugged Extreme (7204)

The world doesn't stand still. You never know what the day will throw at you. You roll with the punches, and so will your Dell Latitude 12 Rugged Extreme with the industry's first rugged flip-hinge display that converts seamlessly between notebook and tablet.

- Crisp 11.6" outdoor-readable display with gloved multi-touch
- Industry-first flip-hinge display
- 4th generation Intel® Core™ processors
- Customizable RGB backlit keyboard
- Native serial port and optional PCMCIA reader
- Durable pogo-pin docking interface



Independently-certified to a full suite of MIL-STD-810G tests. Confident security with Dell Data Protection Encryption and available Intel® vPro™ and TPM 1.2

only **\$1682⁹⁹** #13191766

Incredible strength inside and out



14" Dell Latitude Rugged Extreme (7404)

Life happens in the real world, where your notebook may be exposed to hazards such as accidental drops, vibration, water, dust and extreme temperatures. The Dell Latitude 14 Rugged Extreme was built for the worst with the most durable materials available. Back that up with all the manageability, security and support you'd expect from a Dell and you've got what you need to get the job done when the going gets rough.

- Expansive 14" outdoor-readable display with gloved touch
- 4th generation Intel® Core™ processors
- Optional discrete graphics
- Fast and reliable solid state storage
- Customizable RGB backlit keyboard
- Dual native serial ports and optional PCMCIA reader
- Durable pogo-pin docking interface

only **\$1652⁹⁹** #13242207

With up to 10 hours of battery life from the standard 6-cell battery, you can keep plugging away without having to plug in.

Designed for computing perfection

Dell Chromebook 11 (3120)

Enjoy a hassle-free experience with the affordable new Dell Chromebook 11 with easy connectivity, long battery life and automatic security updates.

- A fully-sealed keyboard and touch pad provide spill protection
- At under three pounds with compact 11.6" displays, it's easy to pop it in a bag and get going



only **\$269⁹⁹** #13407413



13.3" Dell Latitude Education Series (3340)

Built to withstand any environment, it's subject to military-standard testing for durability, and features rubberized LCD and base trim for superior drop protection. Its exclusive, fully sealed keyboard and touchpad provides the industry's best spill protection on a student laptop.

- Intel® Core i3 processor (3MB cache, 1.70GHz)
- 4GB RAM • 500GB HDD
- Windows® 7 Pro 64-bit or Windows® 8.1 Pro downgrade

only **\$572⁹⁹** #13185855



Powers the software you need

Surface runs desktop software like any other Windows PC. Connect to your organization's network with Windows Pro, connect to additional monitors and printers easily, and enjoy the best experience with Microsoft Office³ - including Outlook, Excel, Word, PowerPoint - plus Windows Apps, while you touch, type, write, or draw with Surface Pen.

only **\$549** #13473642

Surface 3



Surface Pro 3

Built for productivity

Surface is fast and efficient, inside and out. It runs an Intel[®] processor with Windows Pro, so you can expect laptop features such as easy remote management, trusted Microsoft support plus security features like BitLocker, Trusted Boot, and Windows Defender. And Surface stands up to heavy use with durable casing and impact resistant optically-bonded glass.

only **\$999** #13156222

#13156223 Microsoft Surface Pro 3 - 12" Intel Core i5

\$1299

#13156227 Microsoft Surface Pro 3 - 12" Intel Core i7

\$1549

Customize your experience



Click-in keyboard

Available in a variety of colors, the keyboard doubles as a cover and provides a full typing and trackpad experience.



Dock and do more

Easily transform to a complete desktop workstation with Docking Station.



Write naturally

Write, draw, and annotate documents with the Surface Pen. It feels like a fountain pen in your hand.



Microsoft Complete

Includes an extended warranty to three years, accidental damage protection, and Advanced Exchange for quicker replacement.



4G LTE⁴

No Wi-Fi? No problem. Stay connected with 4G LTE. Available on Surface 3.



Complementary accessories

Up your productivity with accessories made for Surface. Visit Surface.com.

Inspire team collaboration

Share mission-critical documents, files, and more with your team anytime and anywhere with the speed and convenience only Office 365 can offer.

Microsoft Office 365 (Plan E3) subscription license

Get the most dependable office suite software you know and love along with email, video conferencing, file storage, and sharing, with enhanced communication tools and ultimate work-from-anywhere mobility.

\$19⁹⁹/month* #9775744

*1-year subscription required.



PCMG Terms of Use & Sale

- All returns require a return authorization number. Requests must be made within 15 days of purchase. Returns may be subject to a minimum 15% restock fee. The amount refunded will be the lower price of either the date of purchase or date of return.
- To request a return authorization number, please call your Account Executive at the phone number listed on the front of this packing slip.
- Tape the return label provided to you on the box and ensure the return authorization number is clearly marked. Do not write on the original manufacturer's box.
- Returned product(s) must be complete including manufacturer's original package, accessories, software and manuals. Incomplete returns may be refused.
- A product must be received in our warehouse within 10 business days from the date the return authorization is given.
- The customer is responsible for all return shipping costs. COD shipments will not be accepted.
- We are not responsible for lost or stolen packages. We recommend using a courier that can track your package with a tracking number.
- Pack your return securely. We recommend insuring it for your protection.
- All other policies are in accordance with the policies published in our latest catalogs and on our website www.pcmg.com.
- We are not responsible for integrity or backups of data on any drive returned to us even if included in a system.
- Subsequent to an approval authorization, a credit to an account or issuance of a check can take up to 30 days.
- Missing a rebate? Look it up on our website: www.pcmg.com or call your Account Executive.

Terms/Warranty Disclaimer. PCMG expressly disclaims all expressed or implied warranties. Including any implied warranty of merchantability or of fitness for a particular purpose non-infringement. PCMG shall have no liability to anyone for incidental or consequential damages or any other liability, loss or damage arising out of or related to the merchandise sold. All merchandise is so "AS IS". PCMG makes no warranty as to the performance of any merchandise sold. We are not responsible for the system downtime, lost date, etc. This disclaimer by PCMG in no way affects the terms of a manufacturer warranty, if any. The following manufacturer's products cannot be returned for any reason. The manufacturer must be contacted for all repairs and warranty replacements. The warranty on the product is directly from the manufacturer. We will be happy to assist with the installation and instructions. However, the following manufacturers require you to contact them directly for repairs or replacement of your product. Unless subject to applicable master agreement or SOW signed by each parties, the offer and sale related to this invoice/packing slip is subject to the Terms of Use and Sale @ <http://www.pcmg.com> and those set forth herein not withstanding any purchase order to the contrary. Any disputes related hereto must be brought individually and not part of any class, in accordance with the above relevant Terms of Use and Sale.

The following manufacturer's product cannot be returned for any reason. The manufacturer must be contacted for all repairs and warranty replacements.

VENDOR	Acer	APC	Apple	Cisco	Eaton	
TECH SUPPORT #	800.816.2237	800.555.2725	800.275.2273	800.553.2447	800.356.5794	
WEBSITE	www.us.acer.com	www.apc.com	www.apple.com	www.cisco.com	www.eaton.com	
VENDOR	Garmin	HP/COMPAQ	Hitachi	IBM	Lenovo	
TECH SUPPORT #	800.800.1020	800.474.6836	800.448.2244	Parts & Warranty 800.388.7080	800.426.7378	
WEBSITE	www.garmin.com	www.hp.com	www.hitachi.com	Hardware Service 800.428.7378	www.lenovo.com	
VENDOR	Lexmark	Logitech	Microsoft	Olympus	Quark	Samsung CE
TECH SUPPORT #	800.332.4120	646.454.3200	800.642.7676	888.553.4448	800.676.4575	800.726.7864
WEBSITE	www.lexmark.com	www.logitech.com	www.microsoft.com	www.olympusamerica.com	www.quark.com	www.samsungelectronics.com
VENDOR	Seagate	Sharp	Sony PC's	Tom-Tom	Toshiba	Western Digital
TECH SUPPORT #	800.732.4283	800.237.4277	888.476.6972	866.486.6866	800.457.7777	800.275.4932
WEBSITE	www.seagate.com	www.sharpsusa.com	www.sony.com	www.tomtom.com	www.toshiba.com	www.wdc.com

Call 1.800.625.5468 or visit pcm-g.com

PCM-G

Designed with your creativity and productivity in mind

MacBook Air

Packed with power and ready for work
Experience the ultra light and powerful MacBook Air battery life lasting between 9 and 12 hours. That means from your morning commute until bedtime your MacBook Air will be ready to work. And with up to 30 days of standby time, you can always pick up where you left off.



Model	Size	4th Gen Processor	RAM	Flash Storage	Graphics	List Price	SAVE!	PCMG Price*
#13446720	11.6"	1.6GHz Intel® Core™ i5	4GB	128GB	Intel® HD Graphics 6000	\$899	\$5	\$894
#13446727	13.3"	1.6GHz Intel® Core™ i5	4GB	128GB	Intel® HD Graphics 6000	\$999	\$5	\$994
#13446729	13.3"	1.6GHz Intel® Core™ i5	4GB	256GB	Intel® HD Graphics 6000	\$1199	\$5	\$1194



MacBook Pro with Retina display

Aesthetics and performance—all in one
Get vivid color and unbeatable processing speed. The 15-inch model gives you speeds up to 2.8GHz, 6MB of shared L3 cache, and Turbo Boost speeds up to 4GHz.

Model	Size	Processor	RAM	Flash Storage	Graphics	List Price	SAVE!	PCMG Price*
#13446711	13.3"	2.7GHz Intel® Core™ i5	8GB	128GB	Intel® HD Graphics 6100	\$1299	\$5	\$1294
#13446712	13.3"	2.7GHz Intel® Core™ i5	8GB	256GB	Intel® HD Graphics 6100	\$1499	\$5	\$1494
#13240565	15.4"	2.2GHz Intel® Core™ i5	16GB	256GB	Intel® Iris™ Pro Graphics	\$1999	\$10	\$1989

New MacBook

Boost your computing experience

The new MacBook has been redesigned from the inside out, from its Force Touch trackpad and the all-new USB-C port to its improved keyboard and energy-efficient 12-inch Retina display. Not only is it ultra-portable, its ultra chic.



Model	Size	Processor	RAM	Flash Storage	Graphics	Color	List Price	SAVE!	PCMG Price*
#13482396	12"	1.1GHz Intel® Dual Core™	8GB	256GB	Intel® HD Graphics 5300	Silver	\$1299	\$5	\$1294
#13482398	12"	1.1GHz Intel® Dual Core™	8GB	256GB	Intel® HD Graphics 5300	Space Gray	\$1299	\$5	\$1294
#13482400	12"	1.1GHz Intel® Dual Core™	8GB	256GB	Intel® HD Graphics 5300	Gold	\$1299	\$5	\$1294

Experience high quality on-screen performance



iMac

Everything you ever wanted in a desktop computer and so much more.

The iMac offers you stunning visuals and functionality you won't be able to experience with any other type of desktop computer.

No matter if you choose the 21.5-inch or the 27-inch or the premium iMac with 5K display, the iMac will never disappoint in providing you with the ultimate workflow or entertainment experience every single time because its always equipped with the highest performance processors, memory, graphics and so much more.



Model	Size	Processor	RAM	Storage	Graphics	List Price	SAVE!	PCMG Price*
#13188439	21.5"	1.4GHz Intel® Core™ i5	8GB	500GB Hard Drive	Intel® HD Graphics 5000	\$1099	\$10	\$1089
#9792528	21.5"	2.7GHz Intel® Core™ i5	8GB	1TB Hard Drive	Intel® Iris™ Pro Graphics	\$1299	\$10	\$1289
#13312160	27"	3.5GHz Intel® Core™ i5	8GB	1TB Fusion Drive	AMD Radeon R9 M290X with 2GB	\$2499	\$5	\$2494



Display, keyboard & mouse sold separately.

Mac mini

Compute with major power, maximum speed, and minimal space.

Get the affordable powerhouse that packs the entire Mac experience into a 7.7-inch square frame. Just connect the Mac mini to your own display, keyboard, and mouse, and you're ready to make big things happen.

With Intel® Iris Graphics or Intel® HD Graphics 5000, it also delivers graphics performance up to 90 percent faster than the previous generation. And with great connectivity features like Thunderbolt 2 and support for HDTV, Mac mini makes the perfect centerpiece to any setup.

Model	Processor	Memory	Storage	Graphics	List Price	SAVE!	PCMG Price*
#13312163	1.4GHz Dual-Core Intel® Core™ i5	4GB	500GB Hard Drive	Intel® HD Graphics 5000	\$499	\$5	\$494
#13312166	2.6GHz Dual-Core Intel® Core™ i5	8GB	1TB Hard Drive	Intel® Iris™ Graphics	\$699	\$5	\$694
#13312167	2.8GHz Dual-Core Intel® Core™ i5	8GB	1TB Fusion Drive	Intel® Iris™ Graphics	\$999	\$5	\$994

*Price is as of April 2015, is subject to change, does not include taxes or shipping, and is U.S. pricing.



Mailing Management Dept.
1940 E Mariposa Ave.
El Segundo, CA 90245-3467

PRSRT STD
US POSTAGE
PAID
PERMIT NO. 748
Thomaston, GA

Priority code #

Customer #

Vol. GE220G



The new MacBook now available at PCMG.

The new MacBook® delivers a full-size experience in the lightest and most compact Mac® notebook ever. Every element, from the new keyboard and Force Touch trackpad to the 12-inch Retina® display, USB-C port, battery and logic board, has been completely re-imagined to make it not only thinner but also better. The result is more than just a new notebook. It's the future of the notebook. Available in gold, space gray, and silver.

13.1 mm
THIN

2 lb.
LIGHT

12-inch
RETINA DISPLAY

only **\$1299**

#13482396 (Silver) • #13482398 (Space Gray) • #13482400 (Gold)

1.800.625.5468 pcmg.com

Fax additions, corrections, or a request to remove your name from this list to 310.630.3510. We do not release your private information. We occasionally share your postal address with other reputable companies.